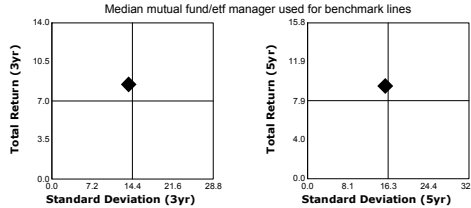


Basic Fund Data

Peer Group Small Blend
 Family Name Vanguard
 Inception Date Product:10/03/1960 | Share Class:11/13/2000
 Total Assets (Mil) \$57,877.47
 Broad Index S&P 500 TR USD
 Peer Group Index Morningstar US Small Cap TR USD
 Best Fit Index Morningstar US Small Cap TR USD
 Manager Tenure (Longest) 0.09 years
 Coleman/O'Reilly

Investment & MPT Statistics %Ranks shown in (#)

	3 Yr	5 Yr	
Sharpe Ratio	0.66 (16)	0.65 (18)	
Standard Deviation	13.69 (24)	15.65 (33)	
Up/Down Capture Ratio	98.91/118.98	105.73/128.03	
	Broad Index		Best Fit Index
	3 Yr	5 Yr	3 Yr
Alpha	-2.73 (28)	-3.82 (27)	0.70
Beta	1.06	1.19	0.95
R-Squared	77.00 (7)	85.45 (4)	99.14



Investment Expenses %Ranks shown in (#)

	Prospectus Net	Gross	Audited Net
Expense Ratio (%)	0.08(2)	0.08	0.08
	12b-1	Front	Deferred
12b-1/Load			
	Turnover	Redemption Fee	
Other Expense Items	11% (5)		
Fee Waiver/Cap			
None			

Purchase Constraints

Minimum Initial Investment	\$10,000
Fund Availability	
Open	

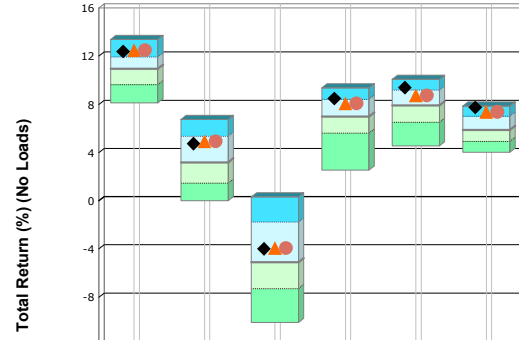
Special Characteristics

Index Fund

Strategy: The investment seeks to track the performance of a benchmark index that measures the investment return of small-capitalization stocks. The fund employs an indexing investment approach designed to track the performance of the CRSP US Small Cap Index, a broadly diversified index of stocks of small U.S. companies. The advisor attempts to replicate the target index by investing all, or substantially all, of its assets in the stocks that make up the index, holding each stock in approximately the same proportion as its weighting in the index.

Performance Analysis (all returns are shown as a percentage)

Investment Return (No load) ♦ | Peer Group Index ▲ | Best Fit Index ●
 Peer Group Percentiles: 10-25 | 26-50 | 51-75 | 76-90



Return (No load)	12.39	4.74	-3.99	8.48	9.39	7.74
% Rank in Peer			40	23	21	12
# of peers	799	799	764	690	626	526
Median Fund/ETF	10.94	3.19	-5.10	6.99	7.90	5.87
Peer Group Index	12.50	4.94	-3.93	8.09	8.75	7.38
Best Fit Index	12.50	4.94	-3.93	8.09	8.75	7.38

Performance Disclosure

Investors should consider the investment objectives, risks, and charges and expenses of a fund carefully before investing. Prospectuses containing this and other information about the fund are available by contacting your financial consultant. Please read the prospectus carefully before investing to make sure that the fund is appropriate for your goals and risk tolerance. The performance information shown represents past performance and is not a guarantee of future results. The investment return and principal value of an investment will fluctuate so that the shares, when redeemed, may be worth more or less than their original cost. Current performance may be lower or higher than the performance information shown. For performance data current to the most recent month-end, please call 800-662-7447 or visit www.vanguard.com.

f360 Fiduciary Score®

	Average			
Score	1 Yr	3 Yr	5 Yr	10 Yr
24	11	4	3	3
# of Peers	690	632	521	464

The f360 Fiduciary Score is a peer percentile ranking of an investment against a set of quantitative due diligence criteria selected to reflect prudent fiduciary management. The f360 Fiduciary Score Average is a one-, three-, five- or ten-year rolling average of an investments f360 Fiduciary Score.

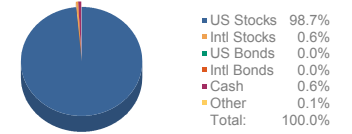
Morningstar Rating™

	Overall	3 Yr	5 Yr	10 Yr
	4★	4★	4★	4★
# of Peers	656	656	558	381

The Morningstar Rating is based on a Risk-Adjusted return measure that accounts for a variation in a fund's monthly performance, placing more emphasis on downward variations and rewarding consistent performance. The overall Morningstar Rating is derived from a weighted average of the three-, five-, and ten-year (if applicable) Morningstar metrics.

Holdings Analysis 2016-4-30

Composition (%): #Stocks: 1482 | #Bonds: 0



Morningstar Style Box™

Small Blend

Regional Weightings (Stock %)

US/Canada	98.70
Latin America	0.17
UK/Europe	0.20
Asia/Middle East	0.23
Africa	0.00
Australasia	0.00
Japan	0.00
Other	0.70

Equity Sector Weightings (Stock %)

Basic Materials	5.05
Consumer Cyclical	14.23
Financial Services	12.92
Real Estate	13.08
Communication Services	1.05
Energy	4.73
Industrial Goods	16.13
Technology	14.21
Consumer Defensive	4.17
Healthcare Services	9.56
Utility	4.88

Top 10 Holdings %

Ingredion Inc	0.30
Waste Connections Inc	0.29
Arthur J. Gallagher&Co	0.29
AGL Resources Inc	0.28
The Valspar Corp	0.27
Duke Realty Corp	0.27
Atmos Energy Corp	0.26
Westar Energy Inc	0.26
Mid-America Apartment Communities Inc	0.26
Regency Centers Corp	0.26
Total (\$1,578.34 mil)	2.74

Analysis, search process, and layout are © 2000-2016, f360, Inc. (www.f360.com). All rights reserved. The analysis and opinions generated by f360: (1) do not constitute professional investment advice; (2) are provided solely for informational purposes; (3) are not warranted or represented to be correct, complete, or accurate; and (4) are for the exclusive use of subscribers to f360. The data source is © 2016 Morningstar, Inc. All rights reserved. The data contained herein: (1) is proprietary to Morningstar, Inc and/or its content providers; (2) may not be copied or distributed; and (3) is not warranted to be accurate, complete or timely. Neither Morningstar, Inc nor its content providers are responsible for any damages or losses arising from any use of this information. Past performance is no guarantee of future results.

